

#1Z KRS - EASY STREET 38F_18.7mL



Oil Pattern Distance: 38 Feet **Reverse Brush Drop:** 38 Feet **Oil Per Board:** 50 uL
Forward Oil Total: 7.25 mL **Reverse Oil Total:** 11.45 mL **Volume Oil Total:** 18.7 mL
Forward Boards Crossed: 145 Boards **Reverse Boards Crossed:** 229 Boards **Total Boards Crossed:** 374 Boards

	Start	Stop	Loads	Speed	Crossed	Start	End	Feet	T.Oil
1	2L	2R	1	14	37	0.0	0.0	0.0	1850
2	10L	10R	3	18	63	0.0	7.6	7.6	3150
3	13L	13R	3	18	45	7.6	15.2	7.6	2250
4	2L	2R	0	18	0	15.2	24.0	8.8	0
5	2L	2R	0	22	0	24.0	33.0	9.0	0
6	2L	2R	0	30	0	33.0	38.0	5.0	0

Forward Reverse More

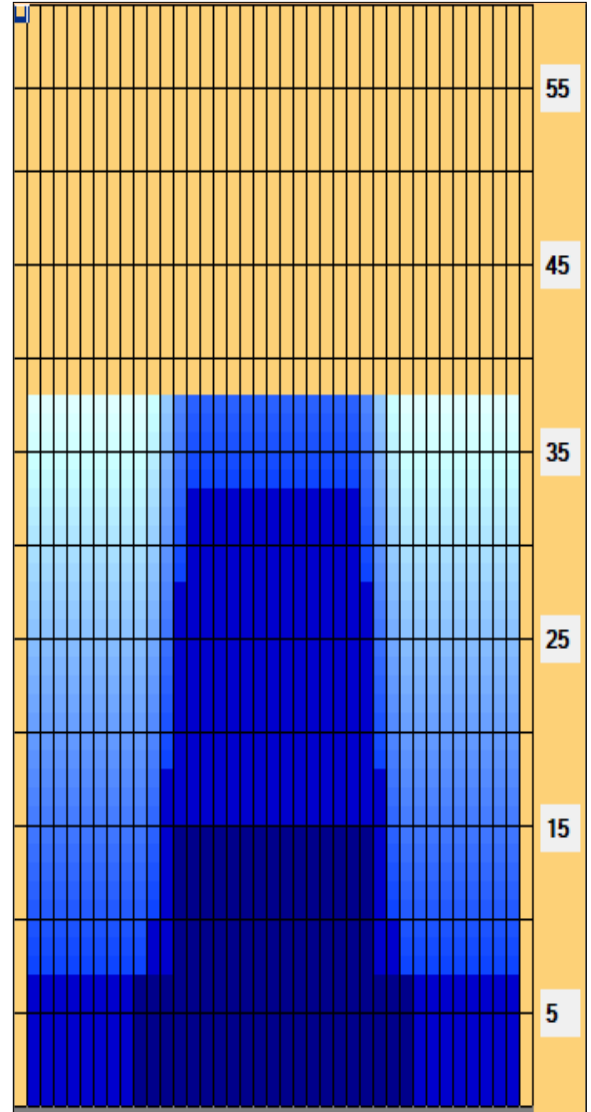
	Start	Stop	Loads	Speed	Crossed	Start	End	Feet	T.Oil
1	2L	2R	0	30	0	38.0	33.0	-5.0	0
2	14L	14R	2	18	26	33.0	27.9	-5.1	1300
3	13L	13R	4	18	60	27.9	17.7	-10.2	3000
4	12L	12R	4	14	68	17.7	9.8	-7.9	3400
5	11L	11R	2	10	38	9.8	7.0	-2.8	1900
6	2L	2R	1	10	37	7.0	5.6	-1.4	1850
7	2L	2R	0	10	0	5.6	0.0	-5.6	0

Forward Reverse More

Conditioner:
 Type In or Select One

 TransferType:
 Type In or Select One

- Forward
- Reverse
- Combined
- Buff



EASY STREET - 7938 Because of the medium distance of this pattern, it is favorable to many different styles and ball choices. Bowlers with higher rev rates can easily swing the ball and bowlers with lower rev rates can play more direct. This pattern is just like walking down EASY STREET with no worries on a nice summer day.

Item Description	3L-7L:18L-18R Outside Track:Middle	8L-12L:18L-18R Middle Track:Middle	13L-17L:18L-18R Inside Track:Middle	18L-18R:17R-13R Middle: Inside Track	18L-18R:12R-8R Middle:Middle Track	18L-18R:7R-3R Middle:Outside Track
Track Zone Ratio	10	3.7	1.02	1.02	3.7	10

